



User Guide Standards

ICE_ Demo Board



Table of Contents

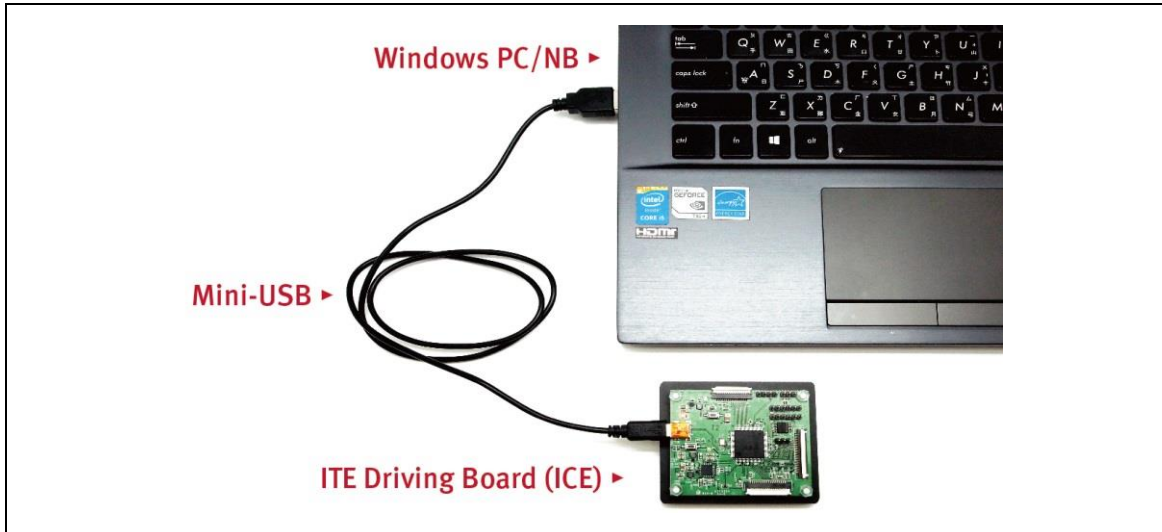
Firmware Update SOP	1
1 Hardware Guide	1
(1) Hardware Requirements.....	1
(2) Hardware Installation	1
2 Software Guide.....	1
(1) Software Requirements	2
(2) Firmware Update by Application Software	2
Hardware Guide	5
1 Hardware Requirements.....	5
(1) PACKAGE CONTENTS.....	5
2 Hardware Guide	6
(1) HARDWARE REQUIREMENTS.....	6
(2) Demo Kit Hardware Description	7
3 ICE FUNCTION BLOCK	7
3 Contact Information	8
4 Legal Information	8

Firmware Update SOP

1 Hardware Guide

(1) Hardware Requirements

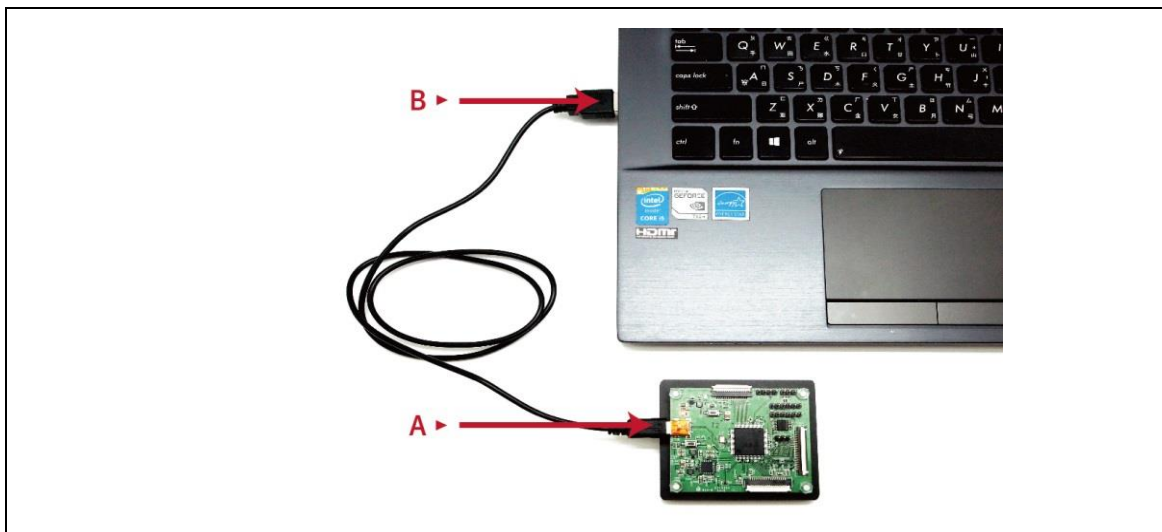
The firmware update requirements included the ITE driving board (ICE), mini-USB cable and Windows PC/NB.



(2) Hardware Installation

Refer to following figure to setup ITE driving board and connect it to your PC/NB :

- a. Connect the mini-USB cable to ITE driving board
- b. Connect the mini-USB cable to PC/NB USB port



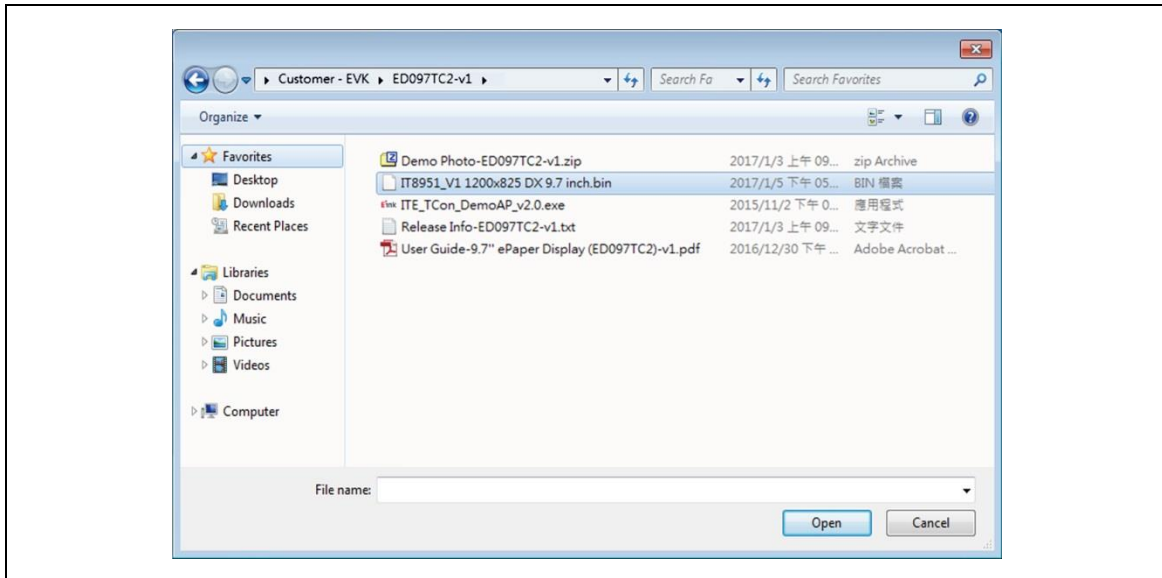
2 Software Guide

(1) Software Requirements


Application software ITE_TCon_DemoAP_v2.0.exe required.

Firmware required: Load the corresponding bin file of ePaper display.

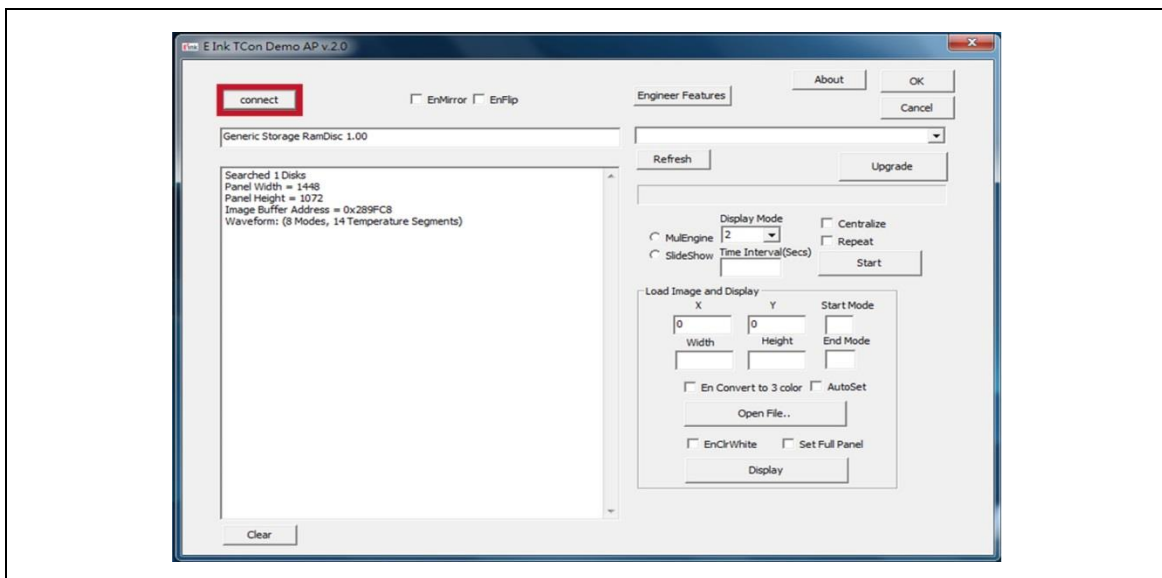
Put the firmware with application software in the same folder.



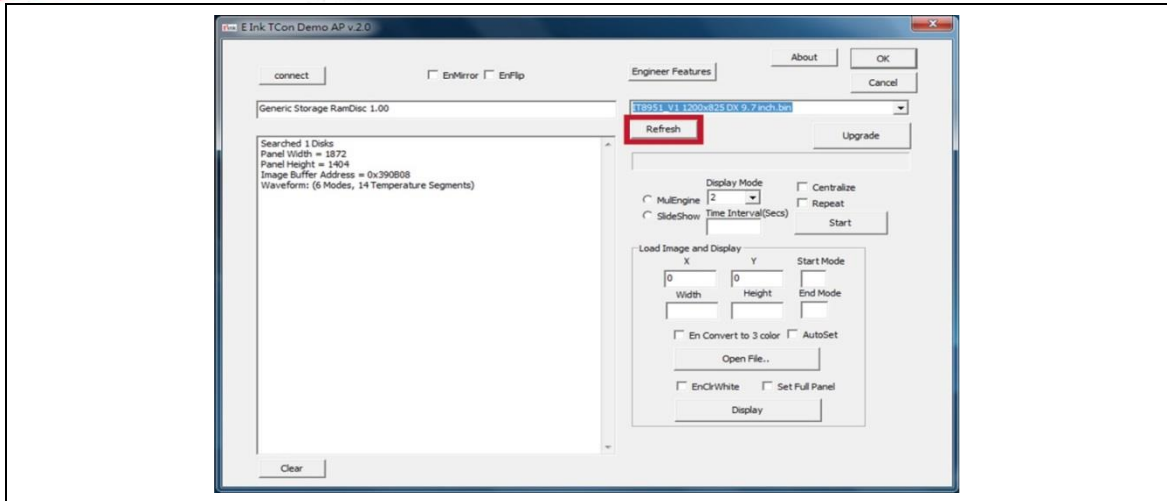
(2) Firmware Update by Application Software

● Press icon  ITE_TCon_DemoAP_v2.0.exe to open application software.

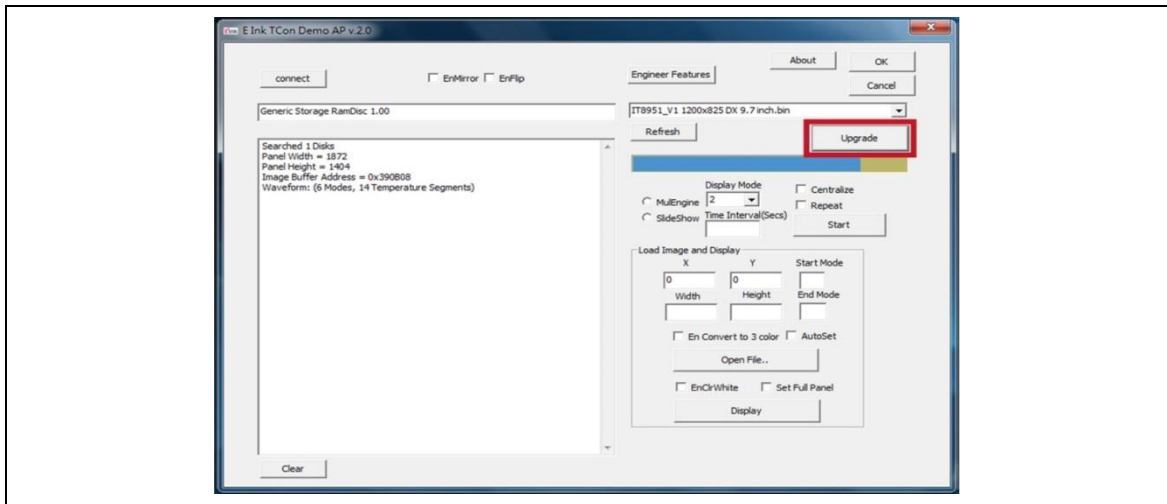
Click “connect” button to make sure the software has connected to physical drive.



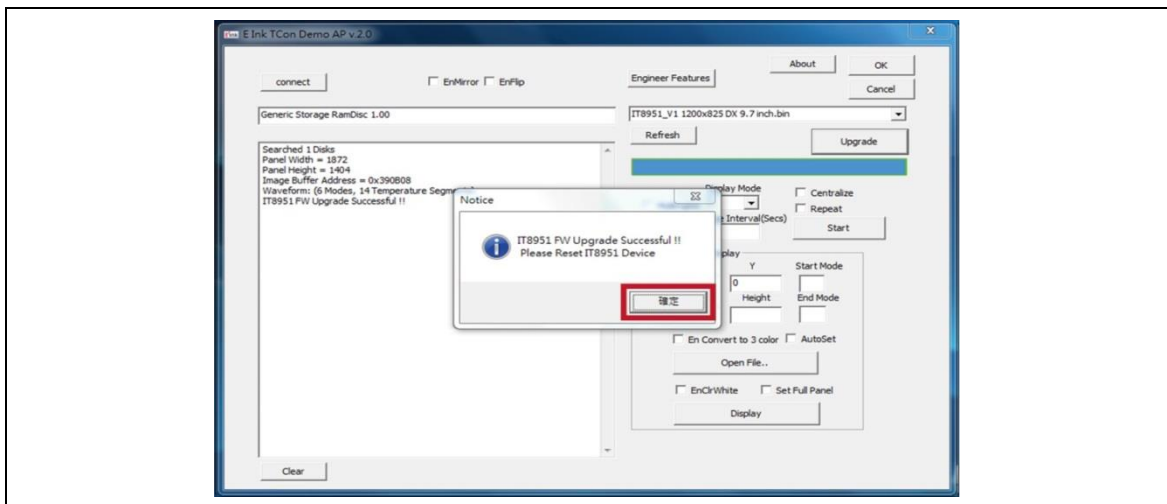
● Click “Refresh” and choose the FW option which you need to load:



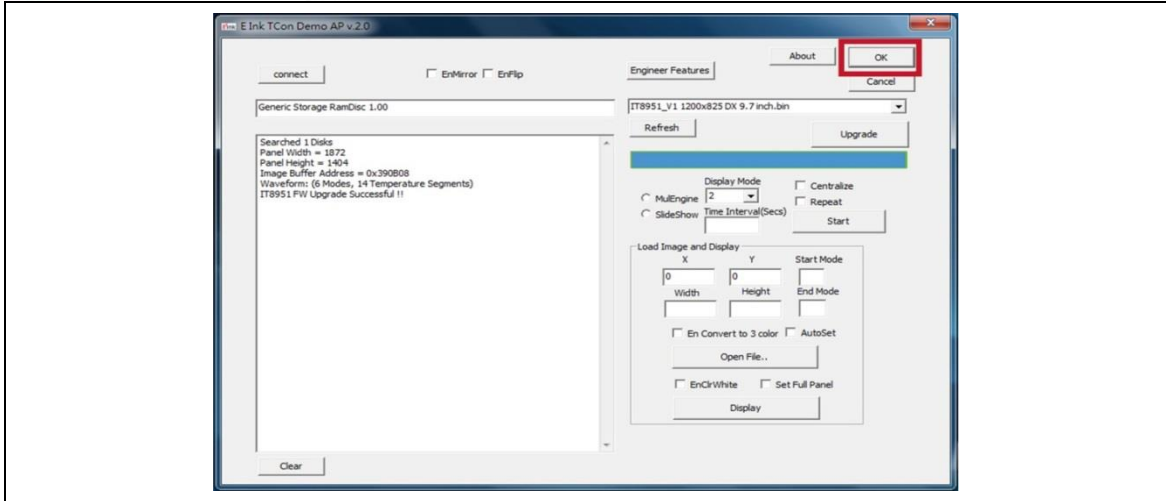
- Click “Upgrade” to load the FW to ICE.



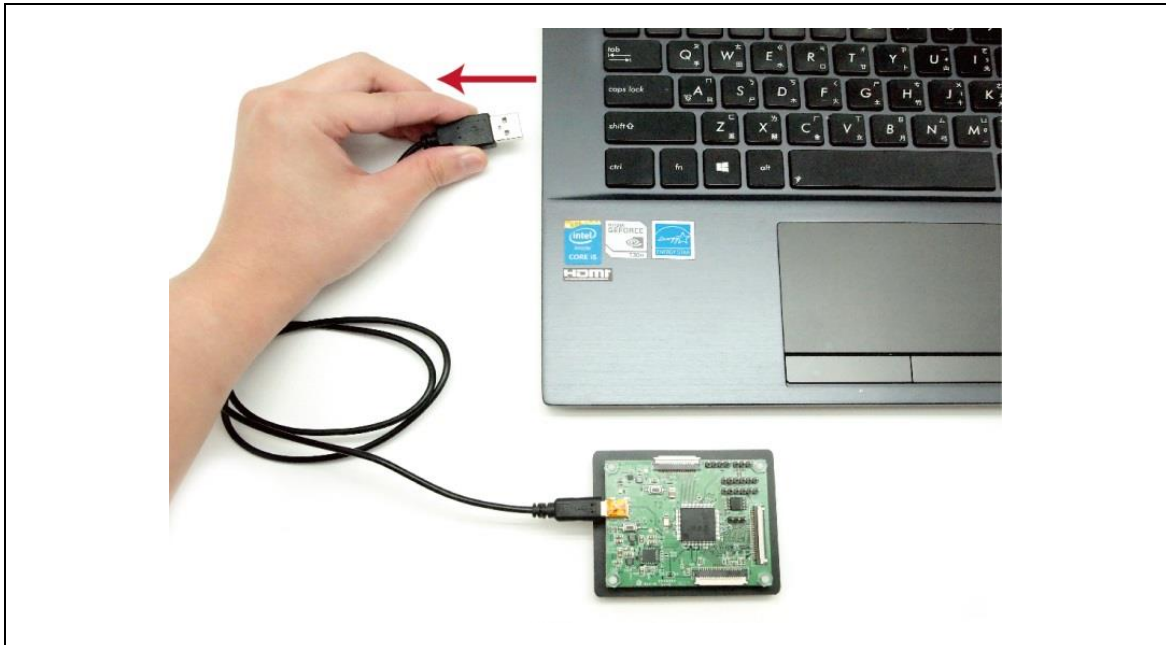
- FW upgrade successful, click “OK” button.



- Click “OK” button to close the AP.



- Pull out the mini-USB cable, firmware update finished.



Hardware Guide

1 Hardware Requirements

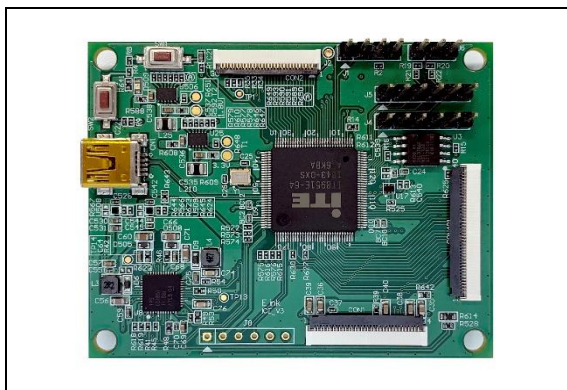
E Ink’s ICE demo kit is intended to highlight the features and benefits of the ePaper display (EPD) display. This low power ePaper display uses E Ink technology which allows each pixel to show two color states – black and white. This document will provide details on how to load custom images onto the EPD.

Included in the ICE demo kit are an ITE board and a mini-USB cable.

(1) PACKAGE CONTENTS

This demo kit contains the following:

- ITE Driving board
- Mini-USB cable



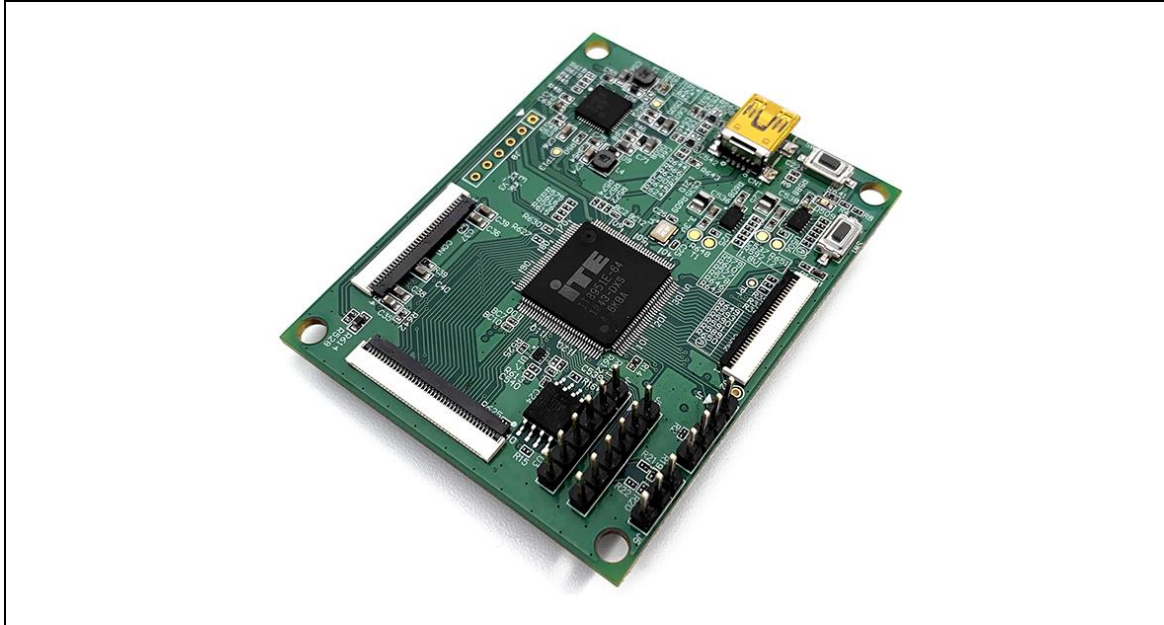
Specification

Item	Specification
TCON	IT8951 DX
TCON Solution	Hardware TCON
Input	5Vdc (USB), power on when connected to PC

2 Hardware Guide

This section describes the hardware setup of the EPD demo kit.

(1) HARDWARE REQUIREMENTS



ITE board



Mini USB cable



Windows PC

Table 1 Minimum PC Requirements

CPU	Pentium III 800 MHz or later
RAM	128MB or greater
Required Software	Windows 7 or newer
Interface	USB port

(2) Demo Kit Hardware Description

The EPD demo kit includes an ITE board. The ITE board (connector 1 or connector 401) and E Ink display panel are connected via a corresponding FPC adapter (ED060KC1 and ED078KC1 are not required). The mini USB port on the demo kit supplies data and power to the ITE board and E Ink panel. Using the E Ink PC application, users can send image data to the board or update settings

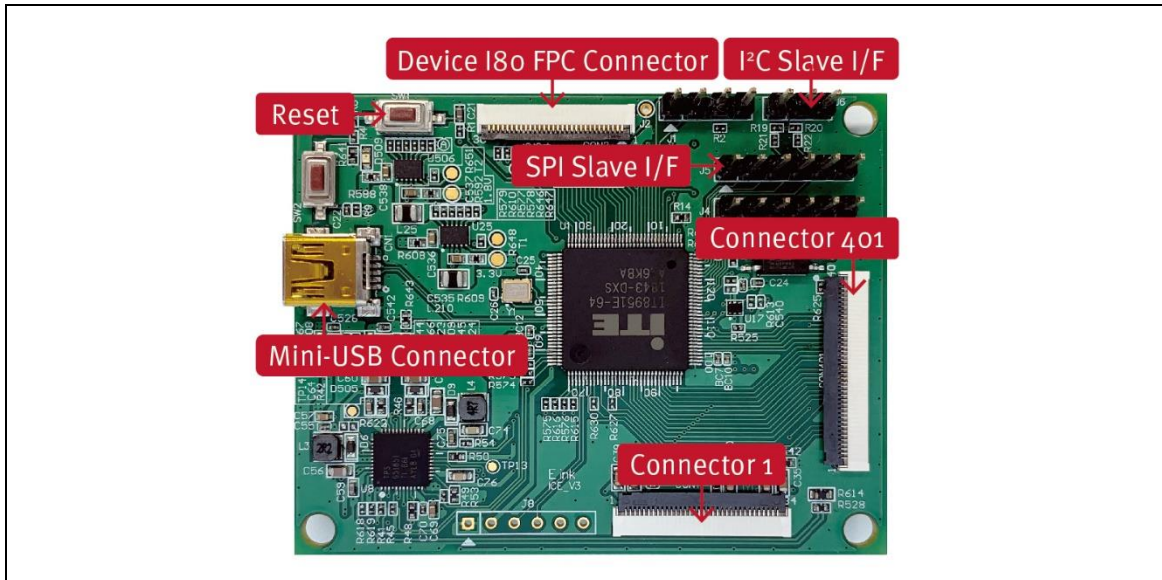
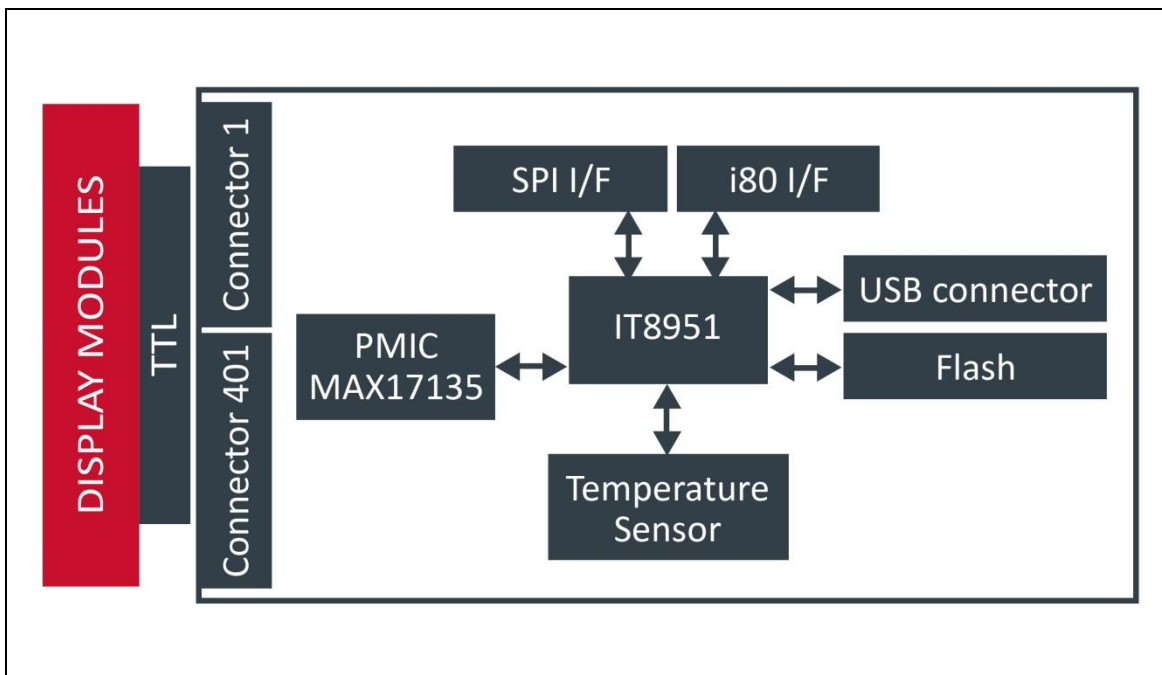


Figure 2 ITE board function

3 ICE FUNCTION BLOCK



3 Contact Information

For more information, please visit

<http://www.eink.com>

For sales office addresses, please visit

http://www.eink.com/contact_sales.html

4 Legal Information

● Definitions

The document is a draft version only. The content is still under internal review and subject to formal approval which may result in modifications or additions. E Ink does not give any representations or warranties as to the accuracy or completeness of information included herein and shall have no liability for the consequences of use of such information.

● Right to make changes

E Ink reserves the right to make changes to information published in this document, including without limitation specifications and product descriptions, at any time and without notice.

● Suitability for use

Products described in this document are intended for development purposes only and comes without any warranty. E Ink accepts no liability for inclusion and/or use of E Ink products in commercial products or applications and therefore such inclusion and/or use is at the customer's own risk. In no event shall E Ink be liable for any direct, indirect, incidental, special, exemplary, or consequential damages (including, but not limited to, procurement of substitute goods or services; loss of use, data, or profits; or business interruption) however caused and on any theory of liability, arising in any way out of the use of the software.

- Applications

Applications that are described herein for any of these products are for illustrative purposes only. E Ink makes no representation or warranty that such applications will be suitable for the specified use without further testing or modification.

- No offer to sell or license

Nothing in this document may be interpreted or construed as an offer to sell products that is open for acceptance or the grant, conveyance or implication of any license under any copyrights, patents or other industrial or intellectual property rights.

- Trademarks

Notice: All referenced brands, product names, service names, and trademarks are the property of their respective owners.

- Revision History

Version	Date	Pag	Description	Author
0.1	2017/4/19		Initial	Joseph Wu